



Gobowen Gazette



Nurture, grow, flourish

Week Beginning 8th September 2025

Dear Parents/Carers,

It was great to see all the children return to school this week and well done to all our new children that came through the school gate with confidence. I would also like to welcome any new parents whose children have joined the school.

The children have taken very little time to settle back into the routine of school life and already everyone is giving their best effort. They are enthusiastic about learning and are impressing their teachers with their work. A super start!

Swimming lessons start next week for Year 3 and Year 5. The children are looking forward to the lessons and for those that have a few nerves, they will be well supported.

Have a great weekend.

Mr R. Walsh
Headteacher

Lunch Menu and Busy Lizards Menu - Week 2

Monday 8th September	All day	Bikeability—Year 6
Tuesday 9th September	All day 10.00—12.30pm	Bikeability—Year 6 Maple & Birch Swimming Lessons—Week 1 of 5
Wednesday 10th September	All Day	Bikeability—Year 6
Thursday 11th September		
Friday 12th September		

After School Clubs

After School Clubs begin week commencing Monday 15th September and will run for 6 weeks. A letter will be sent home on Monday 8th September 2025.



Lunchtime Supervisor Vacancy



We have a vacancy for a Lunchtime Supervisor.

12.00pm—1.15pm Monday—Friday (term-time only).

Grade 1, SCP 2, £12.26 per hour, fixed term until 26/3/2026.

If you are interested in applying, please visit our website (vacancies tab) or ask for an application pack at the school office.

Attendance
Class of the Week

Week ending 18th July 2025

Willow	92.2%
Sycamore	92.9%
Hazel	95.0%
Maple	95.6%
Ash	96.5%
Birch	90.4%
Oak	97.3%

Class of the week is
OAK with 97.3%

CONGRATULATIONS!

95% is the
average attendance in
primary schools.

95% or higher is
considered

GOOD attendance.

This means you have had less than 10 days
off school in a year.

Our target is to maintain an attendance
level of **97% or higher**.



Achievement Certificates

Week ending 18th July 2025

Acorn	Sullivan	Teddy
Willow	Grayson	Isabelle J
Sycamore	Henry B	Martin
Hazel	Gwennie	Bailey
Maple	Penny	Finley
Ash	Hugo	
Birch	Sanyukta	
Oak	Princess	Bella

Lunchtime Mia (Hazel)
 Bella (Oak)

Headteacher Osian (Acorn)



Baby Ollie - Heart Surgery Fundraiser

Ollie (lives in Gobowen) was born with a rare and complex congenital heart condition, and sadly the NHS have deemed him ineligible for the surgery he desperately needs. However, a world-renowned team at Stanford Children's Hospital in the U.S. have offered him a chance, and his family are doing everything they can to get him there.

They have set up a verified GoFundMe page and have begun reaching out to the local community for support.

Ollie's story has just been featured in
The Leader (link below), and their GoFundMe link is below:

<https://www.gofundme.com/f/help-save-baby-ollies-heart>

<https://www.leaderlive.co.uk/news/25431636.wrexham-mum-looking-fund-life-saving-surgery-baby-boy/>

If you wish to donate, please use the link above. Every single donation, no matter how small, will take them one step closer to giving Ollie a future.

Thank you.

School Website

We have a very comprehensive website that is updated weekly with the school newsletter and other useful information about our school and the wider community.

It can be found at
www.gobowenschool.co.uk

Unicef Rights of the Week

Article 3

All adults should do what is best for you.

When adults make decisions, they should think about how their decisions will affect children.

Does your child struggle with their sleep?

Free Sleep Tight Groups

Join us on one of our virtual or face-to-face groups and

- Find out why sleep is important for our health and emotional wellbeing
- Get support to help improve sleep and bedtime routines
- Meet other parents/carers to share and discuss experiences

SEND Group Tuesday 23rd September 2025 from 1.00pm to 3.00pm Virtually Via MS Teams

or

Group Wednesday 24th September 2025 from 9.30am to 11.30am Virtually via MS Teams

SEND groups are for parents/carers of children who might have special educational needs and disabilities, no formal diagnosis is needed to attend the groups.

To book a place email Parenting.team@shropshire.gov.uk or call 01743 250950

Find out
more here



Understanding your child

From toddler to teen

- Would you like to know more about your child's development?
- Do you need help and support to understand your child's behaviour?
- Would you like a chance to meet with other parents and carers with children of a similar age?

Join us for one of our free virtual or face-to-face groups, our next groups start:

Understanding Your Child Group 29th September 2025 from 9.30am to 11.30am Virtually Via MS Teams

Understanding Your Child Group 29th September 2025 from 1.00pm to 3.00pm at Ludlow Primary School

Understanding Your Child Group 1st October 2025 from 12.45pm to 2.45pm at Whitchurch CofE Infants School

Understanding Your Child SEND Group 2nd October 2025 from 9.00am to 11.00am at Woodlands School Wem

Understanding Your Child Group 2nd October 2025 from 9.30am to 11.30am at Sunflower House Shrewsbury

Understanding Your Child Group 2nd October 2025 from 1.00pm to 3.00pm at Whittington Primary School

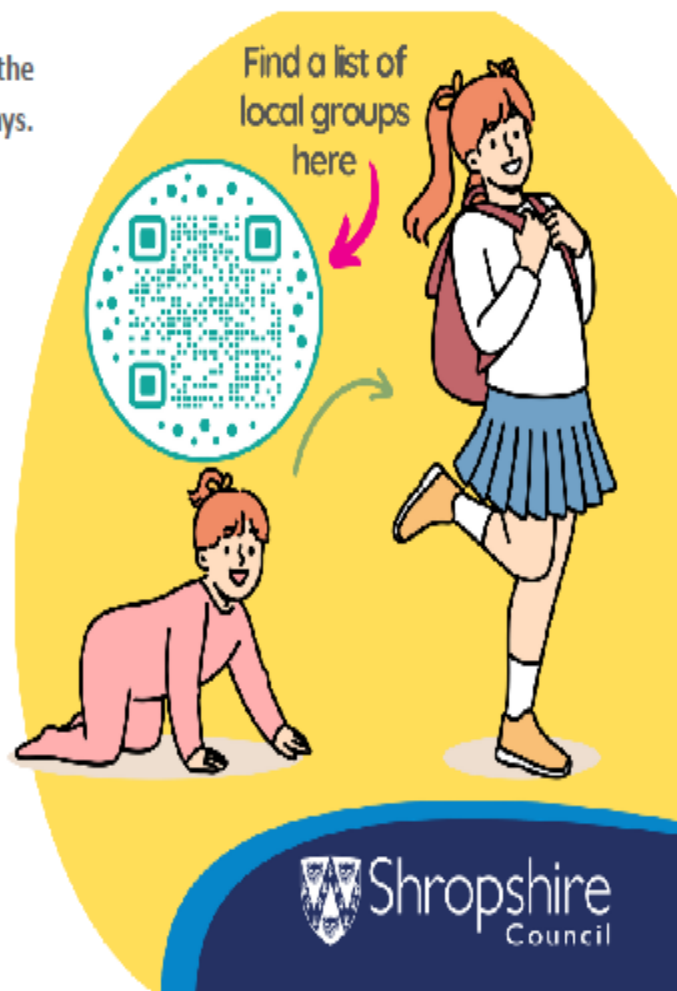
Understanding Your Child SEND Group 3rd October 2025 from 9.30am to 11.30am Virtually Via MS Teams

All our groups run for 10 weeks from the start date excluding the School Holidays.

SEND groups are for parents/carers of Children who might have special educational needs and disabilities, no formal diagnosis is needed to attend the groups.

To book a place email
Parenting.team@shropshire.gov.uk
or call 01743 250950

Find more free online courses at:
inourplace.co.uk/shropshire



Shropshire Parenting Help and Support Line

01743 250950

Mon - Thurs, 9.30am - 4.30pm
Fri, 9.30am - 3.30pm

No judgment, just support.

