



# Gobowen Gazette



Nurture, grow, flourish

Week Beginning 1st September 2025

Dear Parents/Carers,

The children continue to excel in all areas across the school. It has been an incredibly busy week and lots of children have continued to share the good work they are producing. We had an excellent French day on Tuesday and a big thank you to Mrs. Hughes for organising this.

Year 1 had a very good trip to the seaside although it was quite windy. Many of the children talked enthusiastically about the life boat and seeing one launched in to the water. Year 3 had a successful trip to Chester to learn more about the Romans and they enjoyed the experience of marching through Chester as a Roman soldier.

I would like to thank all parents for working with the school when supporting their child as we look to help them achieve their potential. Leavers assembly is later today and we wish all Year 6 pupils the very best for their future.

We will sadly be saying goodbye to Mrs. Evans, Miss Williams and Mrs. Hardy and we thank them for all their hard work.

I hope everyone has a great summer and we look forward to seeing you back in school on 02/09/25 at 8:45am.

Mr R. Walsh  
Headteacher

## Lunch Menu and Busy Lizards Menu - Week 1

Monday 1st September	All Day	Staff Development Day—School Closed to Pupils
Tuesday 2nd September	8.45am	Autumn Term Begins
Wednesday 3rd September		
Thursday 4th September		
Friday 5th September		

## After School Clubs

After School Clubs begin week commencing Monday 15th September and will run for 6 weeks. A letter will be sent home on Wednesday 3rd September 2025.

## Staff Leaving

*Good Luck!*

Mrs Evans will be leaving on Thursday 17th July. We would like to wish her all the very best for the future.

*Good Luck!*

**Attendance**  
**Class of the Week**

Week ending 11th July 2025

Willow	98.2%
Sycamore	96.0%
Hazel	96.0%
Maple	91.0%
Ash	95.7%
Birch	94.6%
Oak	76.2%

Class of the week is  
**WILLOW** with 98.2%

**CONGRATULATIONS!**

95% is the  
average attendance in  
primary schools.

**95%** or higher is  
considered

**GOOD** attendance.

This means you have had less than 10 days  
off school in a year.

Our target is to maintain an attendance  
level of **97% or higher**.



**Achievement Certificates**

Week ending 11th July 2025

Acorn	Wilf	Archie
Willow	Otto	Robbie
Sycamore	Alfie W	Alfie H
Hazel	King	Thea
Maple	Paige A	
Ash	Aiden	Darcey
Birch	Lenny	Maisie
Oak	James	Daniel

Lunchtime      Charlie W (Maple)

Headteacher      Finley (Willow)



**TERM DATES 2025 - 2026**

Summer Term Ends—Friday 18th July 2025

**AUTUMN TERM 2025**

Term Commences

Tuesday 2nd September 2025

Half Term

Monday 27th October - Friday 31st October 2025

Staff Development Day

Monday 3rd November 2025—School closed to pupils

Term Ends

Friday 19th December 2025

**School Website**

We have a very comprehensive website  
that is updated weekly with the school  
newsletter and other useful information  
about our school and the wider  
community.

It can be found at  
[www.gobowenschool.co.uk](http://www.gobowenschool.co.uk)

**Unicef Rights of the Week**

Article 1

Everyone under 18 has these rights.

Article 43-54

These articles explain how governments  
and international organisations like  
UNICEF will work to ensure children are  
protected with their rights.

# Free Summer holiday activities



## Boxercise Classes

For 11 to 16 year olds.

6pm - 7pm every Monday

21<sup>st</sup> July to 18<sup>th</sup> August

Pavilion, Gobowen Playing Fields

## Basketball

For 11 to 16 year olds.

6pm - 7pm every Monday

21<sup>st</sup> July to 18<sup>th</sup> August

Playing Fields, St Martins Road, Gobowen



## Family Rounders

For all family members aged 8 & above

Kids, Teens, Parents, Grandparents

6pm - 7pm every Thursday

31<sup>st</sup> July to 28<sup>th</sup> August

Playing Fields, St Martins Road, Gobowen

**All equipment provided for all activities. Please wear clothing and footwear suitable for exercise.**

To book a place, email: [info@tnsfcfoundation.org.uk](mailto:info@tnsfcfoundation.org.uk)  
or turn up and take part on the day



*Working for our Community*





# OSWESTRY RUGBY

- ✓ MIXED MINIS TAG RUGBY
- ✓ BOYS CONTACT RUGBY
- ✓ GIRLS CONTACT RUGBY
- ✓ COLTS (16-18) CONTACT RUGBY
- ✓ ADULT MIXED ABILITY RUGBY
- ✓ SUMMER TOUCH RUGBY
- ✓ MENS SOCIAL & COMPETITIVE RUGBY

FOR MORE INFORMATION CHECK OUT OUR SOCIALS



# Does your child struggle with their sleep?

## Free Sleep Tight Groups

Join us on one of our virtual or face-to-face groups and

- Find out why sleep is important for our health and emotional wellbeing
- Get support to help improve sleep and bedtime routines
- Meet other parents/carers to share and discuss experiences

**SEND Group Tuesday 23<sup>rd</sup> September 2025 from 1.00pm to 3.00pm Virtually Via MS Teams**

or

**Group Wednesday 24<sup>th</sup> September 2025 from 9.30am to 11.30am Virtually via MS Teams**

*SEND groups are for parents/carers of children who might have special educational needs and disabilities, no formal diagnosis is needed to attend the groups.*

To book a place email [Parenting.team@shropshire.gov.uk](mailto:Parenting.team@shropshire.gov.uk) or call 01743 250950

Find out  
more here



# Understanding your child

## From toddler to teen

- Would you like to know more about your child's development?
- Do you need help and support to understand your child's behaviour?
- Would you like a chance to meet with other parents and carers with children of a similar age?

Join us for one of our free virtual or face-to-face groups, our next groups start:

Understanding Your Child Group 29<sup>th</sup> September 2025 from 9.30am to 11.30am Virtually Via MS Teams

Understanding Your Child Group 29<sup>th</sup> September 2025 from 1.00pm to 3.00pm at Ludlow Primary School

Understanding Your Child Group 1<sup>st</sup> October 2025 from 12.45pm to 2.45pm at Whitchurch CofE Infants School

Understanding Your Child SEND Group 2<sup>nd</sup> October 2025 from 9.00am to 11.00am at Woodlands School Wem

Understanding Your Child Group 2<sup>nd</sup> October 2025 from 9.30am to 11.30am at Sunflower House Shrewsbury

Understanding Your Child Group 2<sup>nd</sup> October 2025 from 1.00pm to 3.00pm at Whittington Primary School

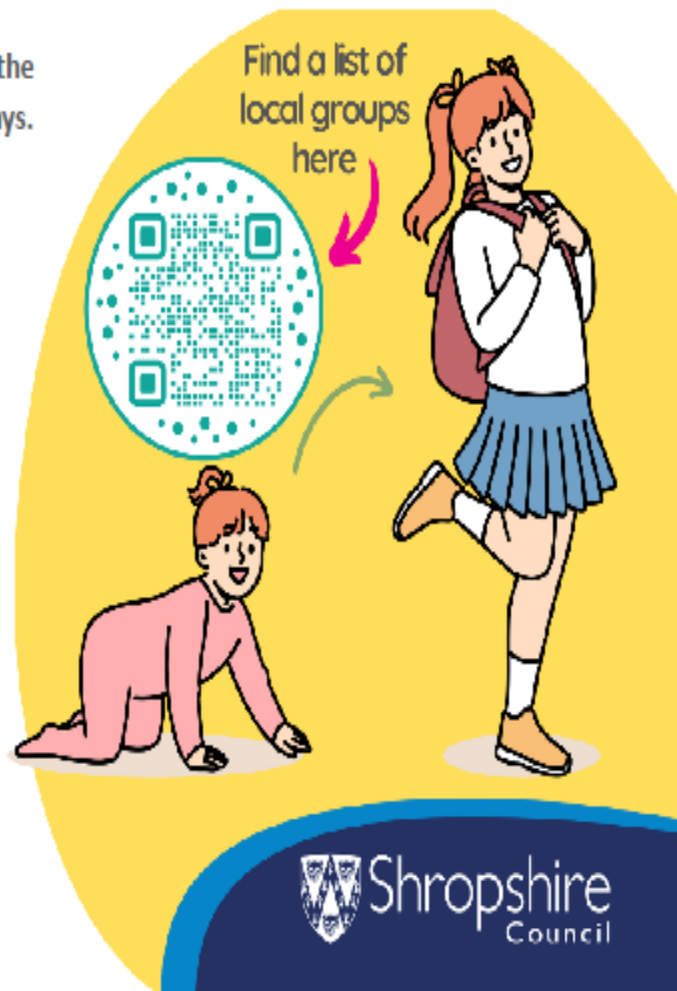
Understanding Your Child SEND Group 3<sup>rd</sup> October 2025 from 9.30am to 11.30am Virtually Via MS Teams

All our groups run for 10 weeks from the start date excluding the School Holidays.

SEND groups are for parents/carers of Children who might have special educational needs and disabilities, no formal diagnosis is needed to attend the groups.

To book a place email  
[Parenting.team@shropshire.gov.uk](mailto:Parenting.team@shropshire.gov.uk)  
or call 01743 250950

Find more free online courses at:  
[inourplace.co.uk/shropshire](http://inourplace.co.uk/shropshire)



# Shropshire Parenting Help and Support Line

01743 250950

Mon - Thurs, 9.30am - 4.30pm  
Fri, 9.30am - 3.30pm

No judgment, just support.

