



# Gobowen Gazette



Nurture, grow, flourish

Week Beginning 7th April 2025

Dear Parents/Carers,

The good weather continues to stay with us and long may it continue! The children have enjoyed more outdoor learning opportunities, and we are hopeful this can continue into next week. However, some lessons do require children to be inside the classroom. I have advised all children to drink more water and to put suncream on before school. You may wish to send your child/ren to school with a hat and if you do, please put their name on the inside.

Year 5 enjoyed a trip to the Marches School to take part in different workshops and all reported they enjoyed the experience.

The parent lesson and lunches continue to be very popular, and I hope you are enjoying the experience.

Have a great weekend.

Mr R. Walsh  
Headteacher

## Lunch Menu and Busy Lizards Menu - Week 1

Monday 7th April		
Tuesday 8th April	2.00–3.00pm 3.15–4.15pm	FOGS Disco—Acorn, Willow, Sycamore & Hazel FOGS Disco—Maple, Ash, Birch & Oak
Wednesday 9th April	9.15–12.00pm 9.15–12.00pm 11.30–1.00pm	KS2 Tag Rugby Team—Competition at Park Hall Rugby Club Years 3/4 Mixed Football Team—Competition at Marches School Easter Lunch—Please see reverse side of Gazette
Thursday 10th April		
Friday 11th April		Last day of term

## Unicef Rights of the Week

### Article 12

You have the right to give your opinion, and for adults to listen and take it seriously.

## Summer Term 2025

### Diary Dates

Easter Holiday—Monday 14th April to Friday 25th April 2025

Summer Term begins—Monday 28th April 2025

Bank Holiday—Monday 5th May 2025

Half Term—Monday 26th May to Friday 30th May 2025

Last Day of Term—Friday 18th July 2025

## Attendance

### Class of the Week

Week ending  
28th March 2025

Willow	96.4%
Sycamore	94.6%
Hazel	97.3%
Maple	91.7%
Ash	94.2%
Birch	92.6%
Oak	94.6%

Class of the week is  
**HAZEL** with 97.3%

### **CONGRATULATIONS!**

95% is the  
average attendance in  
primary schools.

**95%** or higher is  
considered

**GOOD** attendance.

This means you have had less than 10 days  
off school in a year.

Our target is to maintain an attendance  
level of **97% or higher**.

### Parent and Child Lesson and Class Lunch

#### Spring / Summer Term 2025

We would like to invite parents/carers to a  
parent and child lesson followed by a class  
lunch.

A letter will be sent home two weeks prior  
to the dates shown below.

**Wednesday 7th May—Ash Class**

**Wednesday 21st May—Oak Class**

**Wednesday 11th June—Birch Class**

**Wednesday 25th June—Hazel Class**



### Achievement Certificates



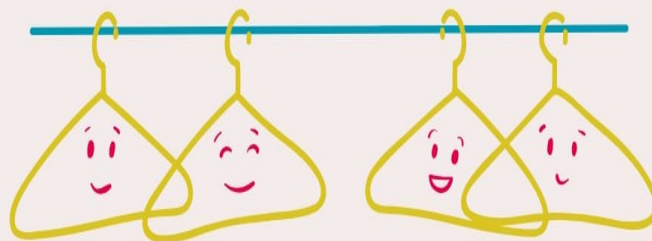
Week ending 28th March 2025

Willow	Otto	Robbie	
Hazel	Elliott	Logan	
Maple	Paige A	Eden	Jacob
Ash	Isla	Emily	
Birch	Eli	Pollyanna	
Oak	Tiani	Matilda	

Lunchtime Bobby (Maple)

Headteacher Cody (Willow)

## UNIFORM WANTED



- Summer Dresses
- School Cardigans
- School Jumpers

If you have any of these items in any size  
please pop them into the donation wheelie  
bin on the KS1 playground. Thank you.

# EASTER MENU

Wednesday 9th April

Tasty Sausage with  
Yorkshire Pudding

**SERVED WITH...**

Roast & Mashed Potatoes  
Peas, Carrots, Cauliflower &  
Gravy

**FOLLOWED BY...**

Easter Biscuit



Food Allergies & Intolerances - Before ordering, please speak to our staff about your requirements

Friends of Gobowen School

# EASTER BINGO

Join us for an evening of exciting  
bingo and prizes!

12 | 04 | 2025

Doors open 7pm

Eyes down 7.30pm

Gobowen Working  
Men's Club

Over 8's welcome



# Holiday CLUB

at Moreton Hall

ALL  
SCHOOL  
HOLIDAYS\*

All Welcome  
Ages  
5 - 13

8 AM - 6 PM

£42

HALF DAYS  
AVAILABLE

REFRESHMENTS AND A HOT LUNCH INCLUDED

**MORETON HALL**

Weston Rhyn, Oswestry,  
Shropshire, SY11 3EW

**BOOK  
NOW!**

[moretonhall.org/holiday-club](http://moretonhall.org/holiday-club)

\*Except for bank holidays, the Christmas week, and a week in late summer